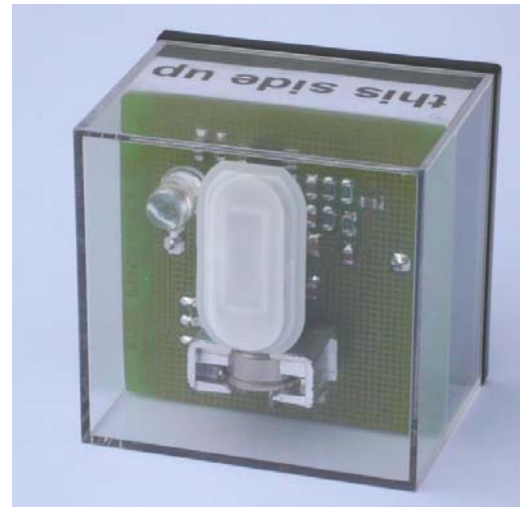




## Passive Infrared Motion Detector Demonstrator TR256

Featuring the most advanced sensor technology with Cone Optics TR230 to evaluate your PIR application

Easy-to-use, battery operated,  $\mu$ Power, LED indicator



### Optics:

The optical receiver consists of a Kube C172 Sensor and a TR230 Cone Optics mirror. This combination can be used to design a compact PIR which is unobtrusive, mechanically stable, and vandal proof.

The cone receives all directions through the same opening, so most environmental effects such as direct sunshine or air drafts are compensated. This results in much lower false alarm rates.

### Electronics:

This is a basic micropower PIR circuit. It draws some 5  $\mu$ A of standby current (0.7mA with LED on). Besides, KUBE offers engineering for circuit design and board layout to meet almost any requirement.

Here a few tips on how to operate the demonstrator:

Open the black cover and make sure the 3V lithium battery (CR2032) is inserted correctly in the holder. Turn power on (slide switch). The LED should now be on. Wait about 30 seconds for the circuit to warm up and get to thermal equilibrium, then start your tests.

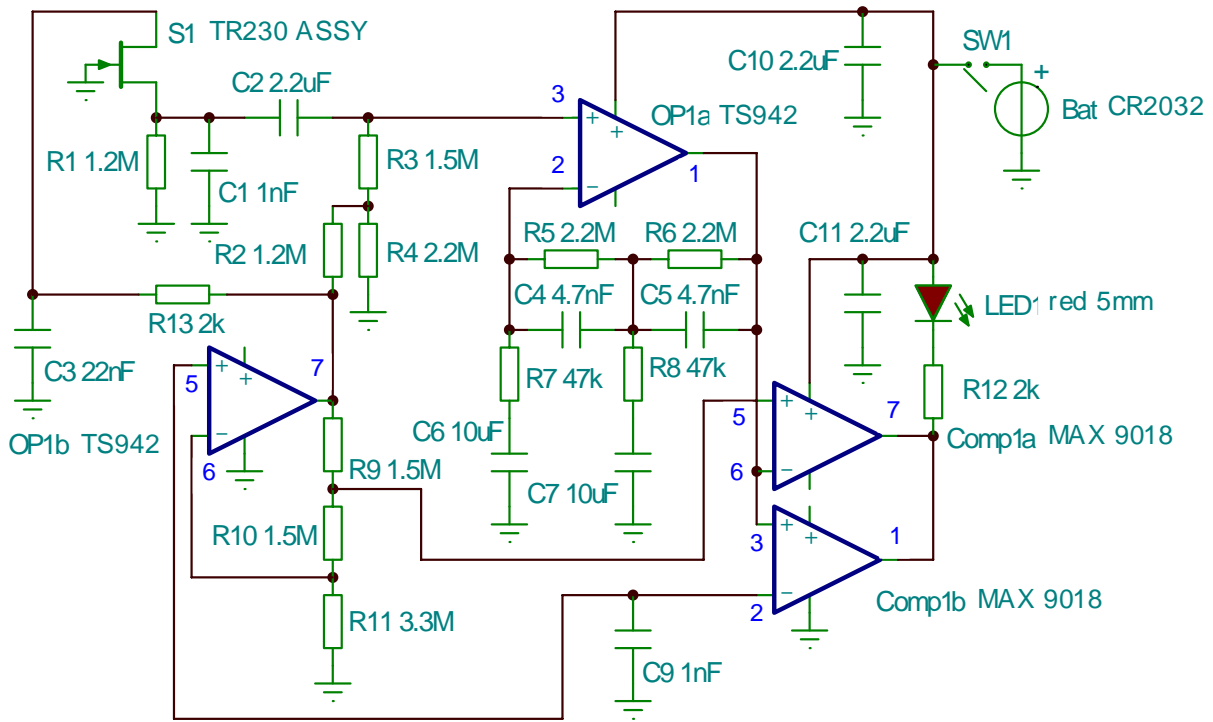
Since the pyroelectric sensor picks up very small temperature differences, the demonstrator must always be operated with the box closed. It will look out the white oval window TR231 made of a special material (KUBE plastic 22400a). It will not see through any other materials such as glass or Acrylic.

The range of the demonstrator is set to about 6 meters. The optics must be vertical as shown to work properly. For more information, see [www.kube.ch/downloads/pdf/kube\\_cone\\_optics\\_tr230.pdf](http://www.kube.ch/downloads/pdf/kube_cone_optics_tr230.pdf)

Dimensions of the complete demonstrator: 40x40x33 mm



Schematics:



**OPTION**  
digital Output

